



Date : Jun 29, 2022

Task : **One** Module : **Academic**

Plan : **Emerald**

Candidate Name :

How to Use This Document

This file has originally been developed on **Google cloud**.

If you receive it in its original form, you can open and have access to all the features of this file (including comments, suggestions, charts, and tables) using your **Google account, Google Docs**.

This way, you will have cross-platform access to this file anywhere, anytime.

If you prefer to have a copy of this document on your local machine, please take the following steps:

1. Open this file via **Google Docs**.
2. In **Google Docs**, go to **File>Download>Microsoft Word(docx)**.
3. Select the **location** that you would want your file to be downloaded to.
4. Now you have a **.docx** copy of this file on your device.
5. Go to the **location** where this file has been downloaded.
6. Open this file via **Microsoft Word**.
7. In **Microsoft Word** go to **Review> Show Comments**
Now you can see all the comments and suggestions.
8. If you prefer a **PDF** version of this file, then in **Microsoft Word** go to **File> Save as** and save this file as a **PDF** file.

For any further assistance, you can always contact **Farzad Academy's Central Office**.

NOTE

Please note that **ONLY a certified IELTS examiner** can provide you with an accurate band score.

Regardless, we strive our best to provide you with a well-educated and accurate estimation of your actual band score. Nonetheless, this does not essentially render into the fact that our evaluation of the assessed compositions are neither error-prone nor error-free.

If by any chance, you feel that our estimation of your band score is unfair or inaccurate, please contact either **Mr.Soleimani** or **Farzad Academy's central office**. Prompt action will be taken.

The IELTS Writing Correction Team at **Farzad Academy**.



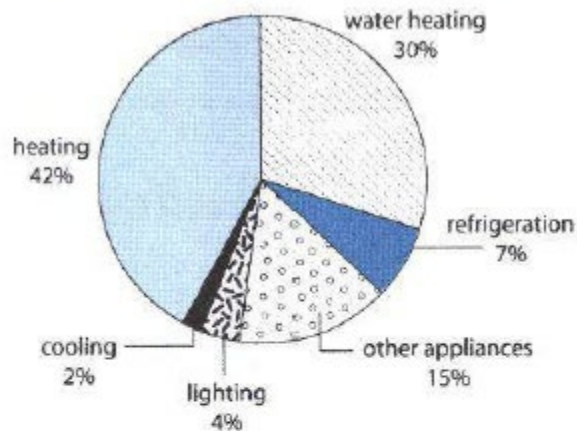


Question

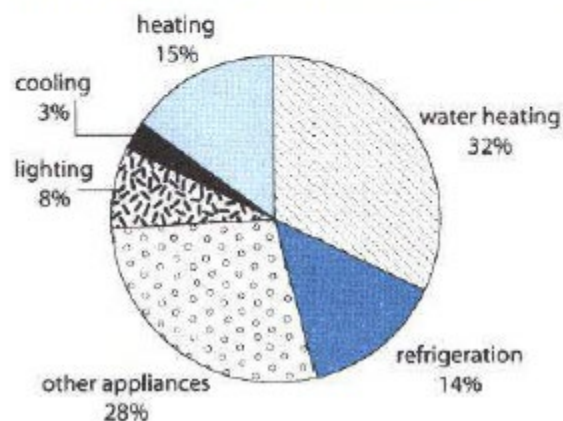
The first chart below shows how energy is used in an average Australian household. The second chart shows the greenhouse gas emissions which result from this energy use.

Summarise the information by selecting and reporting the main features, and make comparisons where relevant.

Australian household energy use



Australian household greenhouse gas emissions





Section 1

Lexical Resource

Given are two pie charts concerning energy usage and associated greenhouse gas (GHG) emissions in Australian households.

It is apparent from the information supplied by the first graph that the greatest proportion of energy is used in heating sector, at 42%, followed by water heating with just under a third of all energy use by Australian households, at 30%. Third in terms of the use of energy is other appliances, accounting for 15%. Also noteworthy is the fact that the figures for the other sectors, namely refrigeration, lighting and cooling, were negligible, at 7%, 4% and 2%, respectively.

With regard to GHG emissions due to the use of energy in Australian households, approximately a third of all emissions is attributable to water heating sector, which represents 32%. With 28% of all GHG emissions, other appliances is second. Note that the figure for heating sector is relatively that of refrigeration, at 14% and 15%, respectively. The proportion of GHG emissions attributable to the use of energy in cooling and lighting sector is negligible, at a mere 3% and 8%, respectively.

To sum up, a significant proportion of energy is used in the sectors of water heating, heating and other appliances, and subsequently these sectors emit the greatest amount of GHG.





Section 2

Grammatical Resource & Accuracy

Given are two pie charts concerning energy usage and associated greenhouse gas (GHG) emissions in Australian households.

It is apparent from the information supplied by the first graph that the greatest proportion of energy is used in heating sector, at 42%, followed by water heating with just under a third of all energy use by Australian households, at 30%. Third in terms of the use of energy is other appliances, accounting for 15%. Also noteworthy is the fact that the figures for the other sectors, namely refrigeration, lighting and cooling, were negligible, at 7%, 4% and 2%, respectively.

With regard to GHG emissions due to the use of energy in Australian households, approximately a third of all emissions is attributable to water heating sector, which represents 32%. With 28% of all GHG emissions, other appliances is second. Note that the figure for heating sector is relatively that of refrigeration, at 14% and 15%, respectively. The proportion of GHG emissions attributable to the use of energy in cooling and lighting sector is negligible, at a mere 3% and 8%, respectively.

To sum up, a significant proportion of energy is used in the sectors of water heating, heating and other appliances, and subsequently these sectors emit the greatest amount of GHG.





Section 3 Coherence & Cohesion

Given are two pie charts concerning energy usage and associated greenhouse gas (GHG) emissions in Australian households.

It is apparent from the information supplied by the first graph that the greatest proportion of energy is used in heating sector, at 42%, followed by water heating with just under a third of all energy use by Australian households, at 30%. Third in terms of the use of energy is other appliances, accounting for 15%. Also noteworthy is the fact that the figures for the other sectors, namely refrigeration, lighting and cooling, were negligible, at 7%, 4% and 2%, respectively.

With regard to GHG emissions due to the use of energy in Australian households, approximately a third of all emissions is attributable to water heating sector, which represents 32%. With 28% of all GHG emissions, other appliances is second. Note that the figure for heating sector is relatively that of refrigeration, at 14% and 15%, respectively. The proportion of GHG emissions attributable to the use of energy in cooling and lighting sector is negligible, at a mere 3% and 8%, respectively.

To sum up, a significant proportion of energy is used in the sectors of water heating, heating and other appliances, and subsequently these sectors emit the greatest amount of GHG.





Section 4 Task Response/ Achievement

Given are two pie charts concerning energy usage and associated greenhouse gas (GHG) emissions in Australian households.

It is apparent from the information supplied by the first graph that the greatest proportion of energy is used in heating sector, at 42%, followed by water heating with just under a third of all energy use by Australian households, at 30%. Third in terms of the use of energy is other appliances, accounting for 15%. Also noteworthy is the fact that the figures for the other sectors, namely refrigeration, lighting and cooling, were negligible, at 7%, 4% and 2%, respectively.

With regard to GHG emissions due to the use of energy in Australian households, approximately a third of all emissions is attributable to water heating sector, which represents 32%. With 28% of all GHG emissions, other appliances is second. Note that the figure for heating sector is relatively that of refrigeration, at 14% and 15%, respectively. The proportion of GHG emissions attributable to the use of energy in cooling and lighting sector is negligible, at a mere 3% and 8%, respectively.

To sum up, a significant proportion of energy is used in the sectors of water heating, heating and other appliances, and subsequently these sectors emit the greatest amount of GHG.





Assessors' Opinion

Assessor 1										
Code FaO621	TA/TR	8	CC	6.5	LR	7.5	GRA	7	Overall	7.5
Assessor2										
Code FaF032	TA/TR	8	CC	7	LR	7	GRA	7	Overall	7.5

Your Final Results

TA/TR	CC	LR	GRA	OVERALL
8	7	7	7	7.5

ASSESSORS' JOINT FEEDBACK ON YOUR ESSAY

Dear Sasan,

We believe that your overall band score on this essay is most likely .

There are a few points that we would like to share with you about your essay;

1. As for TA, you covered all requirements of the task sufficiently. You also presented, highlighted and illustrated key features/ bullet points clearly and appropriately.
2. As for CC, you logically organised information and ideas; there was clear progression throughout. You also used a range of cohesive devices appropriately although there were some under-/over-used devices. Furthermore, you presented a clear central topic within each paragraph.
3. As for LR, you used a sufficient range of vocabulary to allow some flexibility and precision. You also used less common lexical items with some awareness of style and





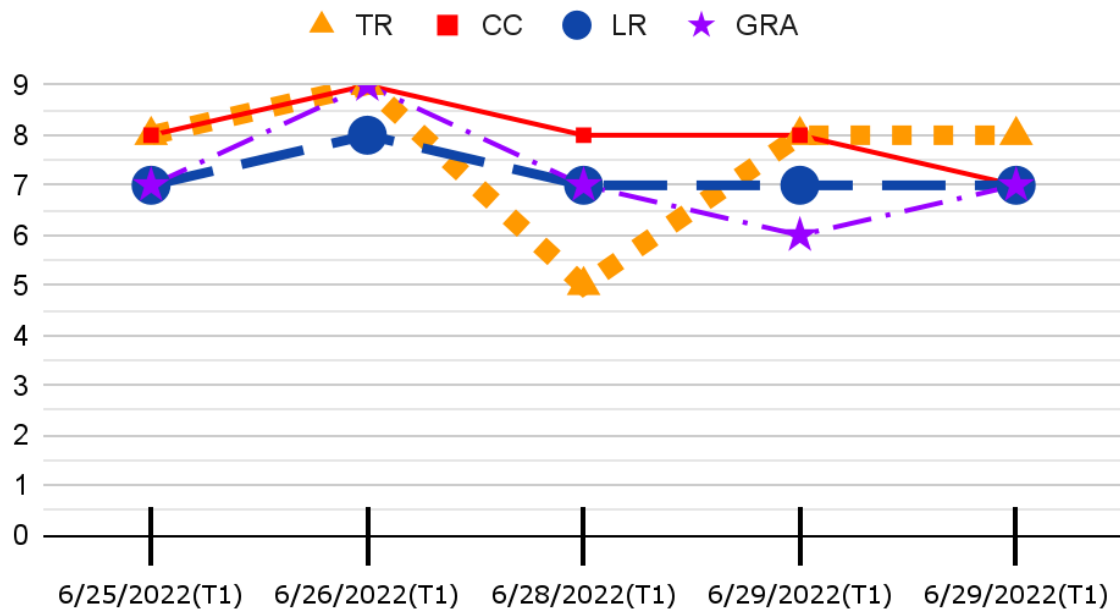
ASSESSORS' JOINT FEEDBACK ON YOUR ESSAY

collocation. However, you produced occasional errors in word choice, spelling and/or word formation.

4. As for GRA, you used a variety of complex structures. You also managed to produce frequent error-free sentences. All in all, you showed good control of grammar and punctuation but may make a few errors.

Your Progress

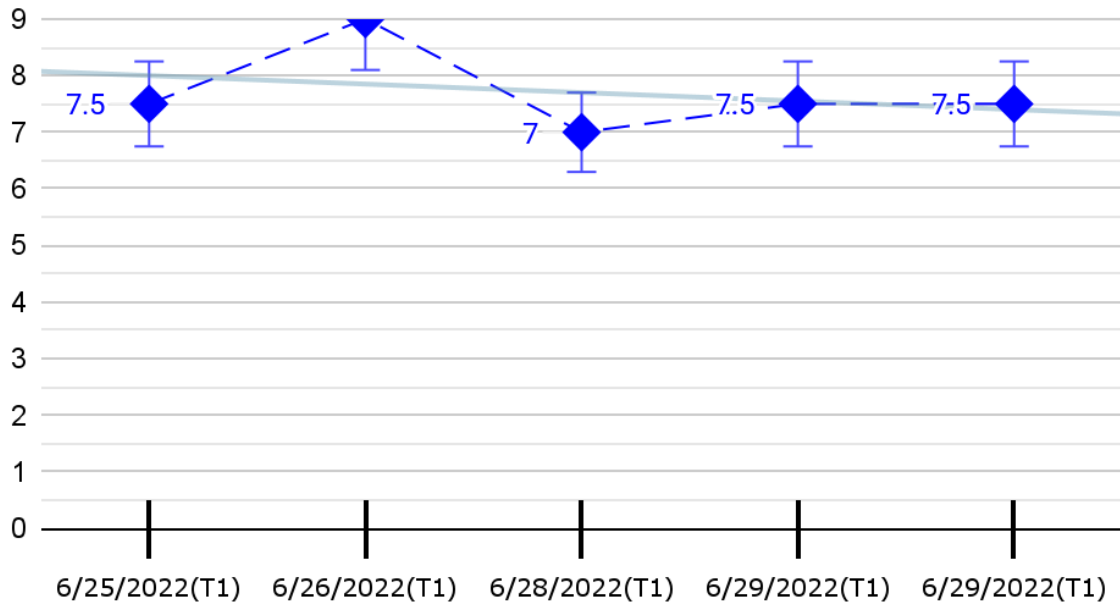
Your Progress (Per Criterion)





Your Progress

Your OVERALL Progress



STATISTICS ON YOUR ESSAY

Indicator	Value	Standard Range
Word Count	209 High	[250,300]Task2 [150, 200]Task1
Sentence Count	9 OK	[9, 14]
Readability	36 Low	[60, 100]
Originality	100% Acceptable	Your essay must be 100% original.
Vocabulary	98% Excellent	[50%, 100%]





STATISTICS ON YOUR ESSAY

Indicator	Value	Standard Range																					
	<table border="1"> <thead> <tr> <th>CEFR Level</th> <th>Number of Words</th> <th>% of Total</th> </tr> </thead> <tbody> <tr> <td>A1</td> <td>116</td> <td>59%</td> </tr> <tr> <td>A2</td> <td>20</td> <td>10%</td> </tr> <tr> <td>B1</td> <td>6</td> <td>3%</td> </tr> <tr> <td>B2</td> <td>29</td> <td>15%</td> </tr> <tr> <td>C1</td> <td>5</td> <td>3%</td> </tr> <tr> <td>Unclassified</td> <td>21</td> <td>11%</td> </tr> </tbody> </table> <p>Your best vocabulary in this essay: attributable, subsequently, concerning, associated, apparent, sector, noteworthy, sectors, namely, negligible, regard, relatively, significant, emissions, proportion, respectively, mere</p>	CEFR Level	Number of Words	% of Total	A1	116	59%	A2	20	10%	B1	6	3%	B2	29	15%	C1	5	3%	Unclassified	21	11%	
CEFR Level	Number of Words	% of Total																					
A1	116	59%																					
A2	20	10%																					
B1	6	3%																					
B2	29	15%																					
C1	5	3%																					
Unclassified	21	11%																					
Transitional Score	86% Very Good	[50%, 100%]																					
	The following transitional phrases were found in your composition: and, to sum up, subsequently																						
Language Appropriacy	90% Excellent	[50%, 100%]																					
Passive Voice Sentences	20% OK	[0%, 20%]																					
Complex Sentence Starts	80% Very Good	[50%, 100%]																					
Correctness	80% Very Good	[50%, 100%]																					
Clarity	45% Low	[50%, 100%]																					
Engagement	58% OK	[50%, 100%]																					





STATISTICS ON YOUR ESSAY

Indicator	Value	Standard Range
Delivery	96% Excellent	[50%, 100%]

THANK YOU FOR YOUR TRUST !

